



Textilní zkušební ústav, s.p.

(Textile Testing Institute)  
Václavská 237/6, 603 00 Brno, Česká republika

**TESTING LABORATORY NO. 1001**  
accredited according to EN ISO/IEC 17025:2018 by the Czech Accreditation Institute

# TEST REPORT

**AZL 19 / 1275-03**

**CUSTOMER :** Ing. Michal Pavlát  
U Sýpky 419  
664 61 Rajhradice

**SAMPLE :** Leather: art. Nevada 684  
(according to the customer order)





**SUBJECT OF ASSESSMENT :**

Ignitability tests smouldering cigarette, match flame equivalent

**CONDITIONS OF APPLICATION OF THE TEST REPORT :**

Test Report contains results of the tests related to the submitted sample only. Sampling has been done by customer. The Report may not be reproduced in any way other than as a complete set. Reproduction of certain parts of the Report is subject to approval of the test laboratory, which has issued it. All information about subcontracted tests results or unaccredited test methods is presented in text part of the test report. This Report is a literal translation of the Czech version.

**PREPARED BY :**  
**CHECKED BY :**  
**NUMBER OF PAGES :**

Eliáš, DiS.   
Čermáková   
3

**DATE OF ACCEPTANCE :**  
8.11.2019

**DATE OF EXAMINATION :**  
13.-15.11.2019

**DATE OF ISSUE :**  
19.11.2019



☎ 420 543 426 730  
☎ +420 543 426 742  
🌐 <http://www.tzu.cz>  
✉ [azl@tzu.cz](mailto:azl@tzu.cz)



Textilní zkušební ústav, s.p.

AZL 19 / 1275-03

page 2

## PROCEDURE OF ASSESSMENT

### **Ignition source : Smouldering cigarette**

was determined according to EN 1021-1

- Conditioning : temperature  $(23 \pm 2)^\circ\text{C}$ , relative humidity  $(50 \pm 5)\%$
- Standard atmosphere for testing : temperature  $21^\circ\text{C}$ , relative humidity 47%
- Dimensions of test frame : seat 300 x 150 mm, back-rest 300 x 450 mm
- Test specimen underlaid by PUR foam layer CF 2830
- Number of specimens tested : 1

**Results:** Assessment, whether occurred ignition or non-ignition.

### **Ignition source : Match flame equivalent**

was determined according to EN 1021-2

- Conditioning : temperature  $(23 \pm 2)^\circ\text{C}$ , relative humidity  $(50 \pm 5)\%$
- Standard atmosphere for testing : temperature  $21^\circ\text{C}$ , relative humidity 47%
- Dimensions of test frame : seat 300 x 150 mm, back-rest 300 x 450 mm
- Test specimen underlaid by PUR foam layer CF 2830
- Time of flame application  $(15 \pm 1)$  s
- Number of specimens tested : 2

**Results:** Assessment, whether occurred ignition or non-ignition.

*The above test results relate only to the ignitability of the combination of materials under the particular conditions of test; they are not intended as a means of assessing the full potential fire hazard of the materials in use.*





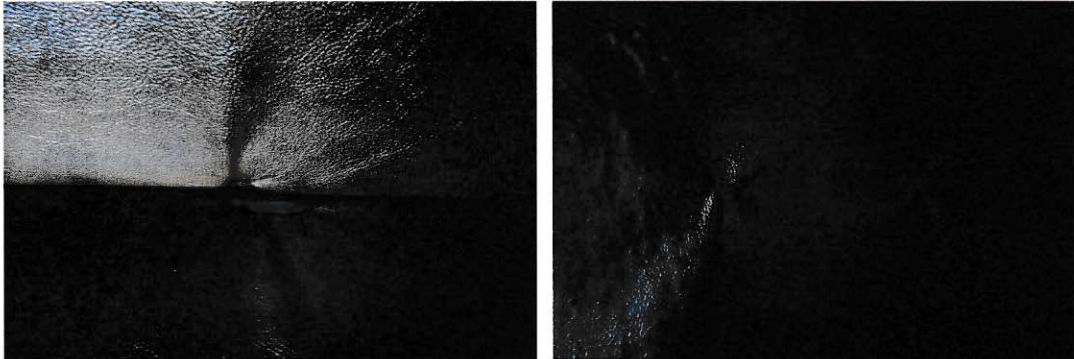
Textilní zkušební ústav, s.p.

AZL 19 / 1275-03  
page 3

TEST RESULTS

<b>Leather: art. Nevada 684</b>			
Characteristics	Test method	Measuring unit	Values found warp / weft
<b>Ignitability test</b> <ul style="list-style-type: none"><li>• smouldering cigarette</li><li>• match flame equivalent</li></ul>	UNI EN 1021-1 UNI EN 1021-2	- -	non-ignition non-ignition

**Location of the ignition source to the surface of the sample (from above)**



Ing. Petr Nasadil  
Head of Testing Laboratory

